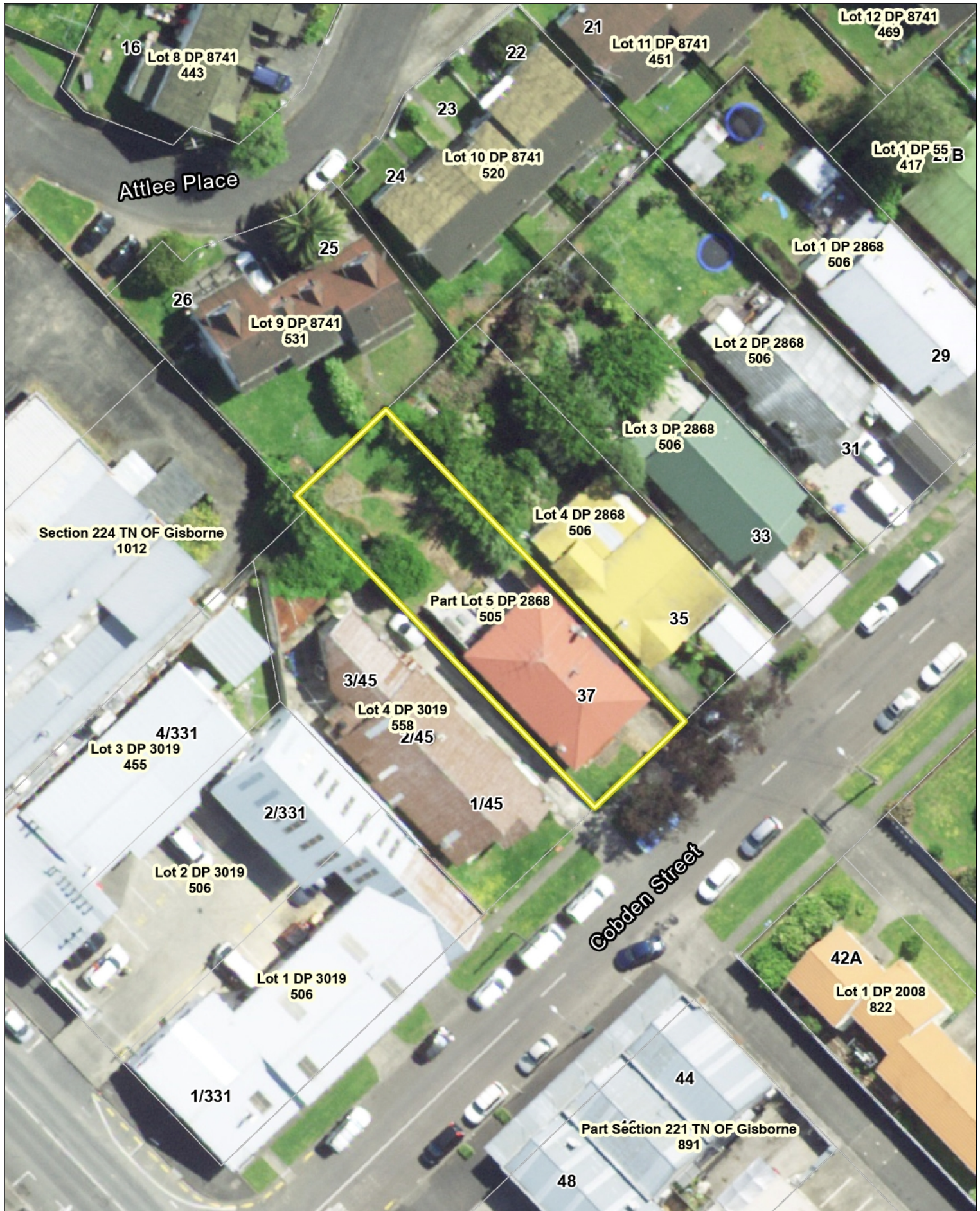


Valuation Address	37 Cobden Street Gisborne City
Assessment Number	0856010500
Legal Description	PT LOT 5 D P 2868
Title	GS103/227
Capital Value	\$ 560000
Land Value	\$ 261000
Annual Rates	\$ 4362.96
Area (ha)	0.0506
Rubbish Day	WEDNESDAY
District Plan Zone	General Residential
Building Consents	18825-Additions/Alterations B5365\X622 7898-Foundations Only B5365\X622
Resource Consents	



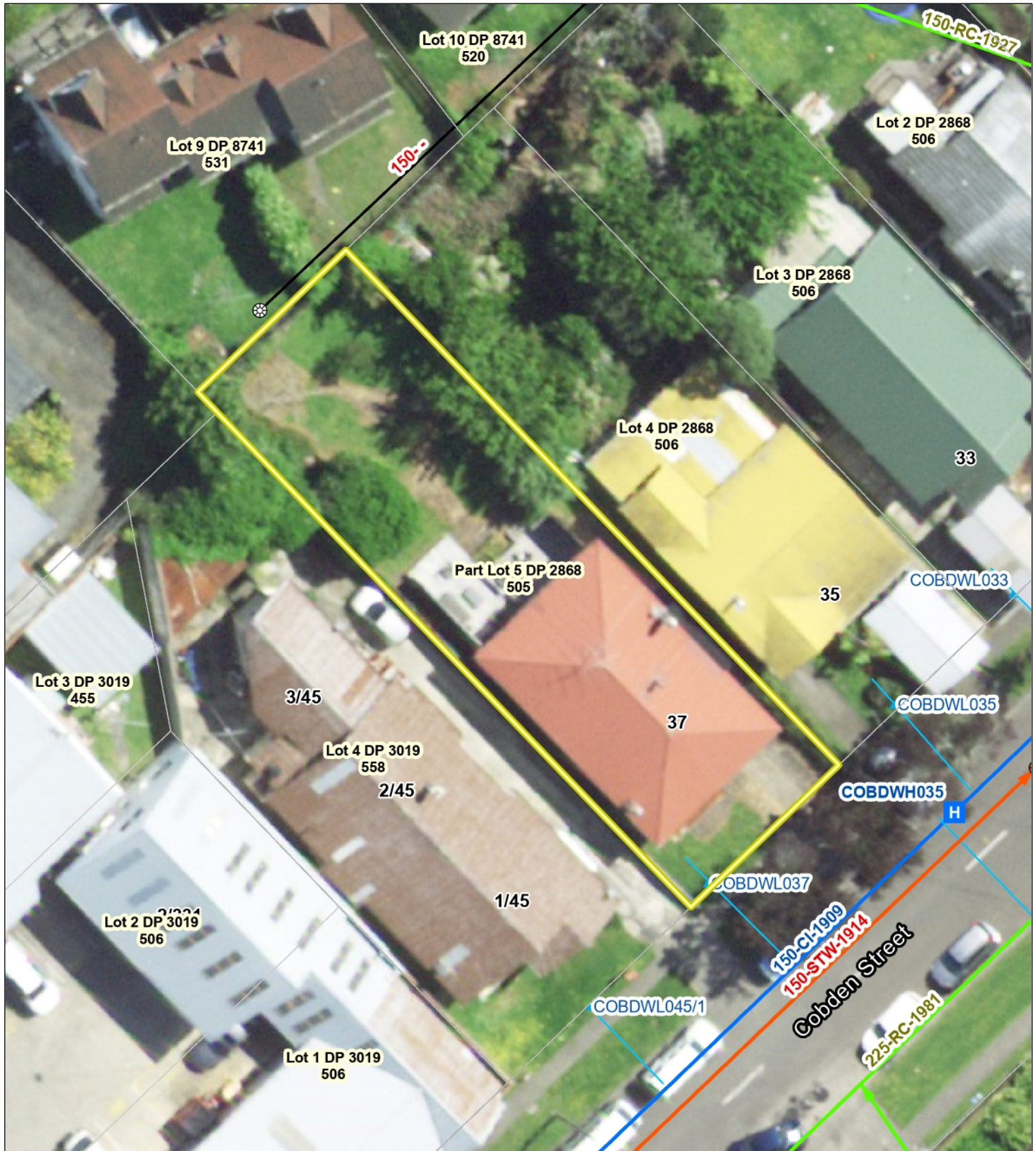
Google Streetview Image

Locality Map



Information on this plan is indicative only and not mapped to a survey accurate scale. Gisborne District Council accepts no liability for its accuracy and it is your responsibility to ensure that the data contained herein is appropriate and applicable to the end use intended. The information included in this report is indicative only and does not purport to be a complete database of all information in Gisborne District Council's possession or control. Gisborne District Council shall not be liable for any loss, damage, cost or expense (whether direct or indirect) arising from reliance upon or use of any information provided, or Council's failure to provide this report. Copyright under Creative Commons Attribution 4.0 International licence. May contain data sourced from the LINZ Data Service, BOPCLASS or Gisborne District Council. For more detailed information relating to this property please request a Land Information Memorandum report from Gisborne District Council - <http://www.gdc.govt.nz/land-information-memorandum-lim/>

Utilities Map



Legend							
Geotech Reports	Drain	GDC Node	Open Channel	Backflow	Water Lateral	Pump Station	Sewer Main
Landfill Areas	Culvert	Pr. Manhole	Pr. Stormwater Pipe	Meter	Water Main	Valve	Private Main
Drains - Rural		Pr. Sump	GDC Pipe	Node	Private Main	Private Manhole	Private Main
Type		Pr. Node		Pr. Hydrant	Unknown	Pr. Valve	Private Main
River	Manhole	StormWater Drains	Water Services	Pr. Valve	WasteWater Services	Pr. Node	
Stream	Sump	StormWater Lateral	Water Toby	Pr. Node	Sewer Main	WasteWater Lateral	
	Node	Stormwater Main	Fire Hydrant	Sewer Main	Sewer Main		
			Valve	Sewer Main	Sewer Main		

Information on this plan is indicative only and not mapped to a survey accurate scale. Gisborne District Council accepts no liability for its accuracy and it is your responsibility to ensure that the data contained herein is appropriate and applicable to the end use intended. The information included in this report is indicative only and does not purport to be a complete database of all information in Gisborne District Council's possession or control. Gisborne District Council shall not be liable for any loss, damage, cost or expense (whether direct or indirect) arising from reliance upon or use of any information provided, or Council's failure to provide this report. Copyright under Creative Commons Attribution 4.0 International licence. May contain data sourced from the LINZ Data Service, BOPASS or Gisborne District Council. For more detailed information relating to this property please request a Land Information Memorandum report from Gisborne District Council - <http://www.gdc.govt.nz/land-information-memorandum-lim/>